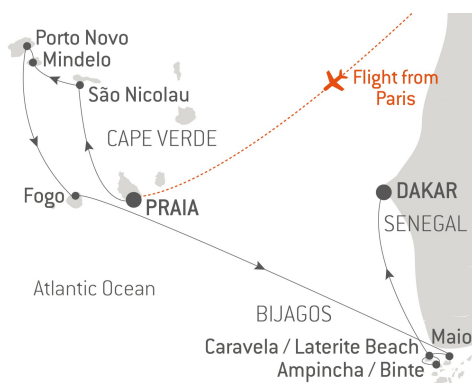


THE BIJAGOS ARCHIPELAGO AND CAPE VERDE - WITH NATIONAL GEOGRAPHIC

10/24/2019 | 12 Days - 11 Nights | from Praia to Dakar | LE DUMONT-D'URVILLE



STOPOVER ITINERARY

- 1 Praia (Cape Verde)
Embarkation 10/24/2019 from 16h00 to 17h00
Departure 10/24/2019 at 18h00
- 2 São Nicolau (Cape Verde)
10/25/2019
- 3 Mindelo (Cape Verde)
10/26/2019
- 4 Porto Novo (Cape Verde)
10/27/2019
- 5 Fogo (Cape Verde)
10/28/2019
- 6 At sea
10/29/2019
- 7 Maio Island, Bijagos (Guinea-Bissau)
10/30/2019
- 8 Caravela Island, Bijagos (Guinea-Bissau)
10/31/2019
- 9 Carache Island, Bijagos (Guinea-Bissau)
11/01/2019
- 10 Caravela Island, Bijagos (Guinea-Bissau)
11/02/2019
- 11 Laterite Beach, Bijagos (Guinea-Bissau)
11/03/2019
- 12 Dakar (Senegal)
Disembarkation 11/04/2019 at 08h00

YOUR CRUISE

In partnership with National Geographic Expeditions.

Board *Le Dumont-d'Urville* for a fabulous expedition cruise between Praia and Dakar. This brand-new 12-day adventure will enable you to discover two exceptional archipelagos including wild nature, cultural heritage and encounters with the local populations.

In Cape Verde, you will call at the island of São Nicolau, which will delight you with its pristine mountain landscapes, its picturesque capital, Ribeira Brava, its friendly inhabitants and its lively traditions.

Further west, you will visit Mindelo, the cultural capital of Cape Verde, where the famous morna singer Cesaria Evora was born.

A gigantic volcanic cone emerging from the Ocean, Fogo or "volcano island" is the most unusual in the Cape Verde archipelago. With scenery of savannah and fields of sugar cane, scattered with peaceful hamlets, Fogo offers you extraordinary panoramas.

The second part of your cruise will take place in the Bijagos Islands. Located off the coast of Guinea-Bissau, this archipelago is one of the most preserved and protected on the planet. Classified as a UNESCO Biosphere Reserve, it is made up of 88 islands, most of which are uninhabited and nestling in the heart of an environment which often remains untouched by humans.

During your Zodiac® excursions, you will get as close as possible to nature, between pale-sand beaches, mangrove stretching as far as the eye can see, savannah, palm trees and baobabs.

The encounters with the wildlife described above illustrate possible experiences only and cannot be guaranteed.