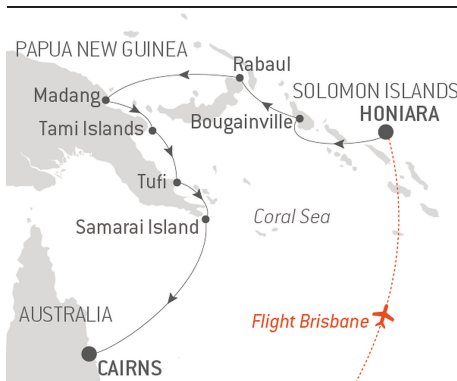


Ancient Cultures of Papua New Guinea

From **10/21/2022**
to **11/1/2022**

Ship: **LE SOLEAL**

From **Honiara, Guadalcanal Island**
to **Cairns**



Flight Brisbane/Honiara + transfer

This PONANT **12-day Expedition cruise** aboard *Le Soléal* will take you to discover the wonders of **Papua New Guinea**. Departing from **Honiara**, embark for an extraordinary adventure to discover very rich local cultures and exceptional underwater life.

Le Soléal will set sail for **Papua New Guinea**, a fascinating land that is home to no fewer than 700 ethnic groups within a highly diverse yet mainly unexplored, ecosystem. You will visit the **Autonomous region of Bougainville**, a unique group of islands that are ecologically and geographically part of the **Solomon Islands archipelago** but not politically part of the nation of Solomon Islands.

Located on the island of New Britain, the port town of **Rabaul** is famous for its **spectacular volcanic setting**. From there, you will set off to observe **Mount Tavurvur**, the region's most active volcano.

Your call at **Tufi**, will undoubtedly be one of the highlights of your voyage. You will fall under the charm of this picturesque region, dubbed the '**Scandinavia of the Tropics**' with its deep fiords through volcanic activity. In this unique setting the local Papuan tribes will share their customs, beliefs and artwork with you.

After a last call in **Samarai Island**, your trip aboard *Le Soléal* will end in **Cairns**.



The information in this document is valid as of 12/3/2021

Ancient Cultures of Papua New Guinea

YOUR STOPOVERS :

HONIARA, GUADALCANAL ISLAND

Embarkation 10/21/2022 from 4:00 PM to 5:00 PM

Departure 10/21/2022 at 7:00 PM

Honiara is the capital city of The Solomon Islands, administered as a provincial town on the north-western coast of Guadalcanal Island. **Honiara** comes from the local Ghari Language “naho-ni-ara” meaning 'facing the ara', the place where the southeast winds meet the land. Discover this city, its beautiful landscape, and the significant role it played in **World War II**. Particularly The Battle of Henderson Field, the last of the three major land offensives conducted by the Japanese in 1942.

AT SEA

Arrival 10/22/2022

Departure 10/22/2022

During your day at sea, make the most of the many services and activities on board. Treat yourself to a moment of relaxation in the spa or stay in shape in the fitness centre. Depending on the season, let yourself be tempted by the swimming pool or a spot of sunbathing. This day without a port of call will also be an opportunity to enjoy the conferences or shows proposed on board, to do some shopping in the boutique or to meet the PONANT photographers in their dedicated space. As for lovers of the open sea, they will be able to visit the ship's upper deck to admire the spectacle of the waves and perhaps be lucky enough to observe marine species. A truly enchanted interlude, combining comfort, rest and entertainment.

BOUGAINVILLE

Arrival 10/23/2022

Departure 10/24/2022

The Autonomous Region of **Bougainville**, formerly known as the North Solomons Province, has been known for its picture-perfect beaches and bays since French explorer Louis-Antoine de Bougainville first sighted the island and gave it its name in 1768. The region played a significant role in the Pacific theatre of war during WWII. With 685 km of coastline and 240,000ha of coral reefs teeming with life there are many destinations awaiting discovery.

RABAUL, BISMARCK ARCHIPELAGO

Arrival 10/25/2022

Departure 10/25/2022

Set at the eastern end of the island of New Britain, the tropical port town of **Rabaul** has always been famous for its spectacular setting. Nestled beside Simpson Harbour, the township is surrounded by six volcanoes, one of which, Mt

Tavurvur, is still active today. The most recent major volcanic eruption was in September 1994 when Tavurvur and Vulcan covered much of Rabaul and surrounding villages with volcanic ash. This eruption saw the growth of the nearby coastal town of Kokopo which has now become the administrative and tourism centre for Rabaul. Join your expedition team for a tour by local transport to see Mt Tavurvur, the Volcano Observatory and various significant sites from World War II.

AT SEA

Arrival 10/26/2022

Departure 10/26/2022

During your day at sea, make the most of the many services and activities on board. Treat yourself to a moment of relaxation in the spa or stay in shape in the fitness centre. Depending on the season, let yourself be tempted by the swimming pool or a spot of sunbathing. This day without a port of call will also be an opportunity to enjoy the conferences or shows proposed on board, to do some shopping in the boutique or to meet the PONANT photographers in their dedicated space. As for lovers of the open sea, they will be able to visit the ship's upper deck to admire the spectacle of the waves and perhaps be lucky enough to observe marine species. A truly enchanted interlude, combining comfort, rest and entertainment.

MADANG

Arrival 10/27/2022

Departure 10/27/2022

Madang Township was once known as the "prettiest town in the South Pacific". Its peninsula setting is a show-place of parks, waterways, luxuriant shade trees and sparkling tropical islands. The diverse geographical nature of Madang province is reflected in the 170 different languages that are spoken. This diversity is showcased in the Madang festival with its colourful displays of "sing sings" performed by numerous cultural groups from across the Madang Province. Today, you will also be treated to a number of cultural performances showcasing the local customs, costume and dance of the coastal, midland and highland communities.

TAMI ISLANDS

Arrival 10/28/2022

Departure 10/28/2022

The **Tami Islands** (Kalal, Wanam & Idjan) are a small group of uplifted coral atolls, with two main villages on the two larger islands and many smaller reefs and cays. In the centre is a beautiful, crystal clear blue lagoon with abundant marine life and stunning coral formations. The islands, located in Morobe Province not far from the town of Finschhafen are seldom-visited. Tami Islanders are renowned artisans and are most famous for their intricately decorated bowls.

TUFI

Arrival 10/29/2022

Departure 10/29/2022

Often described as the “Scandinavia of the tropics”. The spectacular **Tufi** “fiords” plunge over 90 metres deep and rise over 150 metres vertically above the water making for a spectacular backdrop. The traditional way of life plays an important role amongst the villagers with many living in isolated areas along the coast of Cape Nelson and on the slopes of Mount Trafalgar. The area is known for its production of tapa cloth, made from the bark of the paper mulberry tree and skilfully decorated. Guests will travel into the ancient mangrove forests of the Fiords to witness one of the most colourful traditional performances in all of Papua New Guinea. There is also the opportunity to swim and snorkel in the clear waters of Kamo Beach.

SAMARAI ISLAND

Arrival 10/30/2022

Departure 10/30/2022

The **Samarai islands** are located in the China Strait off the south-eastern tip of New Guinea. In its colonial heyday it was said to be one of the most beautiful places in the Pacific. The island was declared a National Historical Heritage Island by the government of Papua New Guinea in 2006. Just 3km west of Samarai, Kwato Island was once an educational center and home to a thriving boat building industry. Following the old tree-lined road to the top of the island reveals a stonewalled church that was built in 1937 and remains a testimony to the missionaries of a bygone era. Join your expedition team for a guided walk on Samarai and Kwato Islands. You also will enjoy swimming and snorkelling on nearby Deka Deka island.

AT SEA

Arrival 10/31/2022

Departure 10/31/2022

During your day at sea, make the most of the many services and activities on board. Treat yourself to a moment of relaxation in the spa or stay in shape in the fitness centre. Depending on the season, let yourself be tempted by the swimming pool or a spot of sunbathing. This day without a port of call will also be an opportunity to enjoy the conferences or shows proposed on board, to do some shopping in the boutique or to meet the PONANT photographers in their dedicated space. As for lovers of the open sea, they will be able to visit the ship's upper deck to admire the spectacle of the waves and perhaps be lucky enough to observe marine species. A truly enchanted interlude, combining comfort, rest and entertainment.

CAIRNS

Arrival 11/1/2022 early morning

Disembarkation 11/1/2022 at 8:00 AM

Washed by the Coral Sea, the harbour town of **Cairns** is located on Australia's north-east coast. The seafront esplanade is a popular place for locals and visitors to walk, swim and picnic under the shade of swaying **palm trees**. The hills surrounding Cairns form the gateway to the **Queensland Rainforests**, proclaimed a UNESCO World Heritage site for their fauna and flora from the Gondwana era.