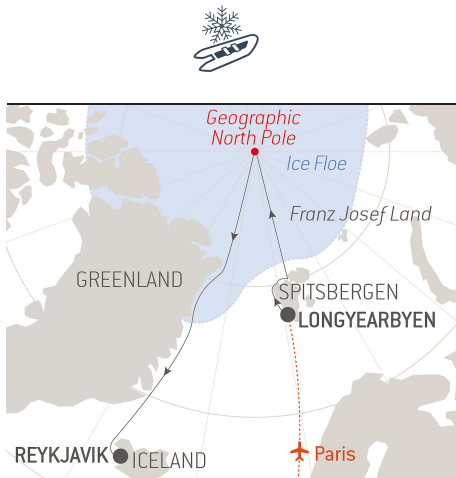


The Geographic North Pole

From **8/22/2022**
to **9/6/2022**

Ship: **LE COMMANDANT CHARCOT**

From **Longyearbyen, Spitsbergen**
to **Reykjavík**



Flight Paris/Longyearbyen + transfer

Push the limits of sailing with this exceptional 16-day expedition cruise to the **Geographic North Pole**.

To reach this mythical point covered by ice floe all year round, 700 km away from any emerged land, you will board *Le Commandant Charcot*, the first hybrid electric polar exploration vessel.

Setting sail from Spitzbergen, you will enjoy an unforgettable maritime experience at the heart of sumptuous landscapes that are constantly evolving according to changes in the ice and the light. This itinerary, which lends itself perfectly to the observation of the **wildlife, particularly rich at this time of the year**, will take you as far as the **pack ice**. Then you will slowly progress to the heart of this silent world, frozen by the extreme cold, in the direction of the Grail of all polar explorers: the North Pole!

Beware though, as the ice floe is constantly drifting, driven together by currents and winds, you too must keep moving if you want to remain on our planet's most northernmost point...

We are privileged guests in these extreme lands where we are at the mercy of weather and ice conditions. Our navigation, mainly in the fjords, will be determined by the type of ice we come across; as the coastal ice must be preserved, we will take this factor into account from day to day in our itineraries. The sailing programme, outings, activities and observation of fauna cannot be guaranteed and are subject to weather and ice conditions. The experiences are unique and vary from day to day and for each departure. The Captain and the Expedition Leader will make every effort to ensure that your experience is as rich as possible, while respecting safety instructions and regulations imposed by the AECO.



The information in this document is valid as of 1/18/2022

The Geographic North Pole

YOUR STOPOVERS :

LONGYEARBYEN, SPITSBERGEN

Embarkation 8/22/2022 from 4:00 PM to 5:00 PM

Departure 8/22/2022 at 6:00 PM

Longyearbyen is the capital of the Norwegian **Svalbard** archipelago, located on **Svalbard's** main island, and is the northernmost territorial capital on the planet. With winter temperatures dropping to below 40°C, the landscapes of this mining town are simply breathtaking. The glaciers, the mountains stretching as far as the eye can see and the untouched nature, make you feel like you're in completely unexplored territory.

AT SEA ALONG SPITSBERGEN

Arrival 8/23/2022

Departure 8/23/2022

The largest island in the Svalbard archipelago, its name meaning "pointed mountains" in German, **Spitsbergen** is the last piece of land before the Arctic ice floe. Aboard your ship, you will sail along the extremely spectacular coastline of this icy land. Between **millennial glaciers** and **rugged mountains**, you will discover a **jagged coastline, hollowed-out by fjords**. A unique setting, the refuge of a particularly rich avifauna, offering you the possibility of taking fabulous photographs from the deck of your ship.

SAILING ICE FLOES

Arrival 8/24/2022

Departure 8/28/2022

Enjoy the absolutely unique experience of sailing to the heart of the **ice floe**, this **vast expanse of virgin, immaculate ice**. The landscapes are constantly changing, shifting from a smooth, flat wilderness to a chaos of ice, then to channels of open water. Your ship will sail along these naturally open channels and through the areas where the frozen layer is thinnest, offering you the chance to experience magic maritime moments in the midst of drifting sea ice. It will also often be an opportunity to see a particular kind of fauna, totally dependent on the ice floe.

GEOGRAPHIC NORTH POLE

Arrival 8/29/2022

Departure 8/29/2022

Defined by a 90° North latitude, the Geographic North Pole lies on the Earth's rotational axis, at the intersection of all meridians. Plunged into darkness for six months of the year, then lit by the sun for the following six months, this **mythical site, permanently covered in ice** and remote from any land, has fascinated generations of explorers. So far, only a very few people have ever reached it: an exploit which is now accessible to you aboard the *Commandant-Charcot*

SAILING ICE FLOES ALONG GREENLAND

Arrival 8/30/2022

Departure 9/3/2022

The **north-east of Greenland** is renowned for being home to one of the oldest and thickest layers of ice on the planet. Aboard your ship, you will have the unique opportunity of sailing to the heart of this icy wilderness, many thousands of years old, and will notably travel along the coast of the **North-East Greenland National Park**, recognised as a biosphere reserve by UNESCO.

AT SEA ABOARD LE COMMANDANT CHARCOT

Arrival 9/4/2022

Departure 9/5/2022

Spend exceptional moments sailing aboard *Le Commandant Charcot*, the world's first luxury polar exploration vessel and the first PC2-class polar cruise ship capable of sailing into the very heart of the ice, on seas and oceans which the frozen conditions render inaccessible to ordinary ships. *Le Commandant Charcot* is fitted with oceanographic and scientific equipment selected by a committee of experts. Take advantage of the on-board lectures and opportunities for discussion with these specialists to learn more about the poles. Participate in furthering scientific research with PONANT and let us discover together what these fascinating destinations have yet to reveal to us.

REYKJAVÍK

Arrival 9/6/2022 early morning

Disembarkation 9/6/2022 at 7:00 AM

Iceland's capital stretches along the edge of a vast bay in the west of the country. **Perlan**, the "Pearl of Reykjavík", a museum located on 'Oskjuhlíð hill, offers a panoramic view of the lush, green landscapes. A little further, one can easily spot the signpost showing the way to the evangelical **Hallgrímskirkja** church, and to the historical centre where one can stroll along the Skólavörðustígur and the Laugavegur, two lively streets with charming small shops. For some relaxation just outside of the city, visitors have the opportunity to visit the Reykjanes peninsula and its famous thermal lagoons of the **Blue Lagoon**.